

Wind Speed & Direction Sensor

Key Features

- Low Power Operation <2mA
- Rolling Average Facility
- SDI-12 V1.3 Compatible
- Multiple Sensors (Maximum 10)
- Solid State – Maintenance Free
- 2 Year Warranty
- Corrosion Free

The WindSonic™ SDI-12 is a low cost anemometer, utilising Gill's proven ultrasonic technology to provide wind speed and direction data via an SDI-12 output. New features include lower power consumption <2mA in standby and a vector or scalar rolling average feature providing 1min average and 1 min max speed with associated direction.

With a robust, corrosion-free polycarbonate housing, this small, lightweight wind sensor is particularly suited to meteorological and hydrological based installations. The WindSonic™ has no moving parts, offering maintenance-free operation in a wide range of applications.



WIND SPEED

Range	0 - 60 m/s (116 knots)
Accuracy	±2% @12 m/s
Resolution	0.01 m/s (0.02 knots)
Response Time	0.25 seconds
Threshold	0.01 m/s

DIRECTION

Range	0 - 360° (No dead band)
Accuracy	±2° @12 m/s
Resolution	1°
Response Time	0.25 seconds

MEASUREMENT

Update rate (for polling)	1 Hz
Parameters	Wind Speed & Direction or U and V (vectors)
Units of Measure	m/s

OUTPUTS

Output type	SDI-12 (refer to manual for technical specification) SDI-12 v 1.3
Baud Rate	1200
Anemometer Status	Supplied as part of standard message

AVERAGING

Rolling Average (normal power operation only)	1 Min Vector or 1 Min Scalar
	1 Min Maximum Speed & Direction

POWER REQUIREMENT

Anemometer (polled at 1Hz)	<2 mA @12V - Low power operation
	<10 mA @12V - Normal power operation

MECHANICAL

External Construction	LURAN S KR 2861/1C ASA/PC
Size	142mm x 163mm
Weight	0.5kg

ENVIRONMENTAL

Protection Class	IP66
Operating Temperature	-35°C to +70°C
Storage Temperature	-40°C to +80°C
Operating Humidity	< 5% to 100% RH
Precipitation	300mm/hr
EMC	EN 61326: 1998

OPERATIONAL

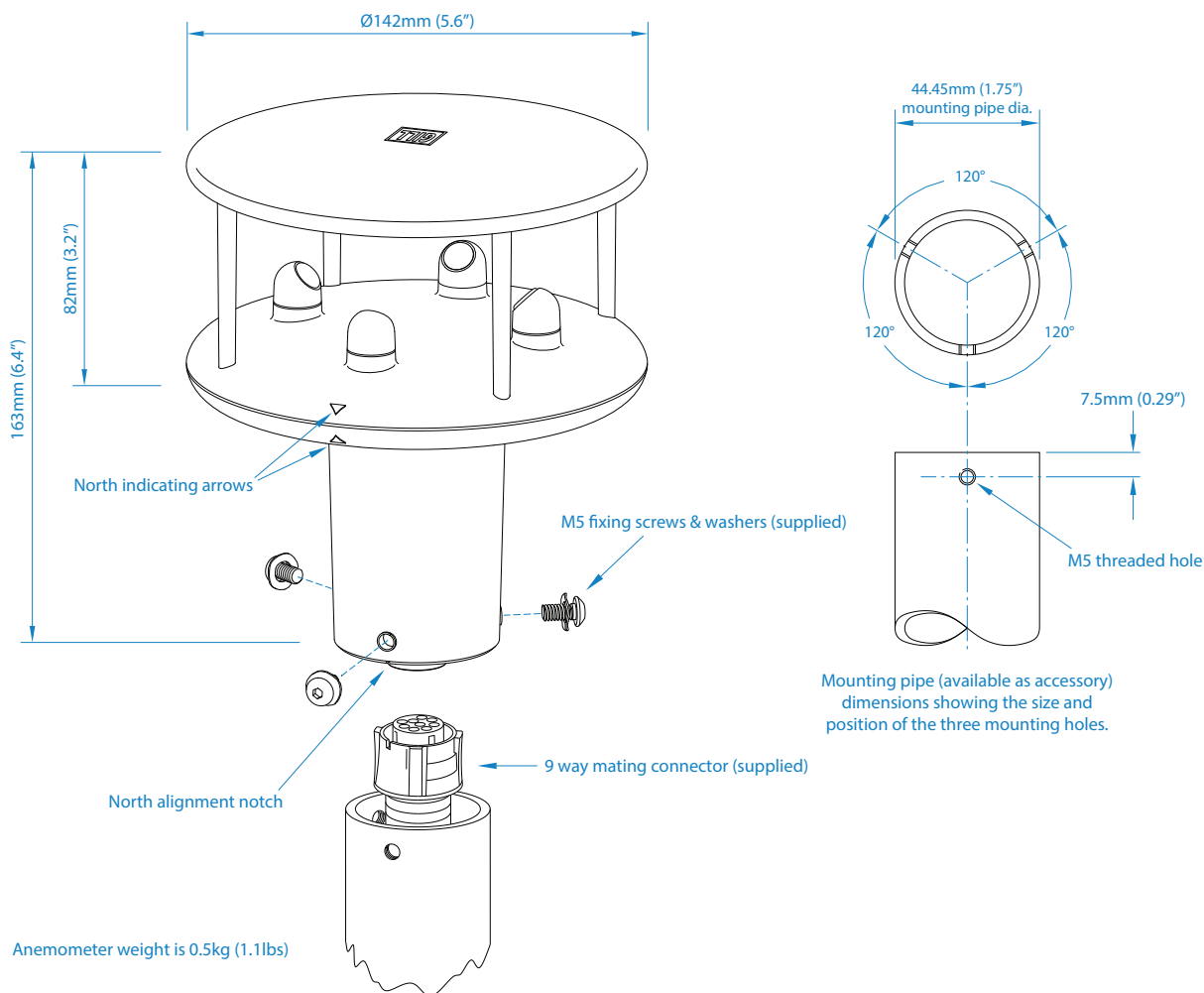
MTBF	15 years
Warranty	2 years
Factory Calibration	Traceable to National Standards

ACCESSORIES

Pipe Mounting (optional)	44.45mm (1.75") dia x 500mm length
Cables (optional)	Available to match output options

Typical Applications

- Remote weather monitoring stations
- Environmental field sites
- Agricultural Met
- Pollution Control
- Utilities
- Hydrological
- HVAC
- Environmental Protection



This product is in continuous development and therefore specifications may be subject to change without prior notice.



Gill Instruments Limited

Saltmarsh Park, 67 Gosport Street
Lymington, Hampshire
SO41 9EG United Kingdom

Tel: +44 (0) 1590 613 500

contact@gillinstruments.com

gillinstruments.com

1405-0028 Iss 7

Copyright © Gill Instruments 2022

Gill Instruments Ltd, Reg No. 2281574
Registered Office: Towngate House, 2-8 Parkstone Road, Poole. BH15 2PW