

# Wind Speed & Direction Sensor

## Key Features

- Low Power Operation <2mA
- Rolling Average Facility
- SDI-12 V1.3 Compatible
- Multiple Sensors (Maximum 10)
- Solid State – Maintenance Free
- 2 Year Warranty
- Corrosion Free

The WindSonic™ SDI-12 is a low cost anemometer, utilising Gill's proven ultrasonic technology to provide wind speed and direction data via an SDI-12 output. New features include lower power consumption <2mA in standby and a vector or scalar rolling average feature providing 1min average and 1 min max speed with associated direction.

With a robust, corrosion-free polycarbonate housing, this small, lightweight wind sensor is particularly suited to meteorological and hydrological based installations. The WindSonic™ has no moving parts, offering maintenance-free operation in a wide range of applications.



### WIND SPEED

Range	0 - 60 m/s (116 knots)
Accuracy	±2% @12 m/s
Resolution	0.01 m/s (0.02 knots)
Response Time	0.25 seconds
Threshold	0.01 m/s

### DIRECTION

Range	0 - 359° (No dead band)
Accuracy	±2° @12 m/s
Resolution	1°
Response Time	0.25 seconds

### MEASUREMENT

Update rate (for polling)	1 Hz
Parameters	Wind Speed & Direction or U and V (vectors)
Units of Measure	m/s

### OUTPUTS

Output type	SDI-12 (refer to manual for technical specification) SDI-12 v 1.3
Baud Rate	1200
Anemometer Status	Supplied as part of standard message

### AVERAGING

Rolling Average (normal power operation only)	1 Min Vector or 1 Min Scalar
	1 Min Maximum Speed & Direction

### POWER REQUIREMENT

Anemometer (polled at 1Hz)	<2 mA @12V - Low power operation
	<10 mA @12V - Normal power operation

### MECHANICAL

External Construction	LURAN S KR 2861/1C ASA/PC
Size	142mm x 163mm
Weight	0.5kg

### ENVIRONMENTAL

Protection Class	IP66
Operating Temperature	-35°C to +70°C
Storage Temperature	-40°C to +80°C
Operating Humidity	< 5% to 100% RH
Precipitation	300mm/hr
EMC	EN 61326: 1998

### OPERATIONAL

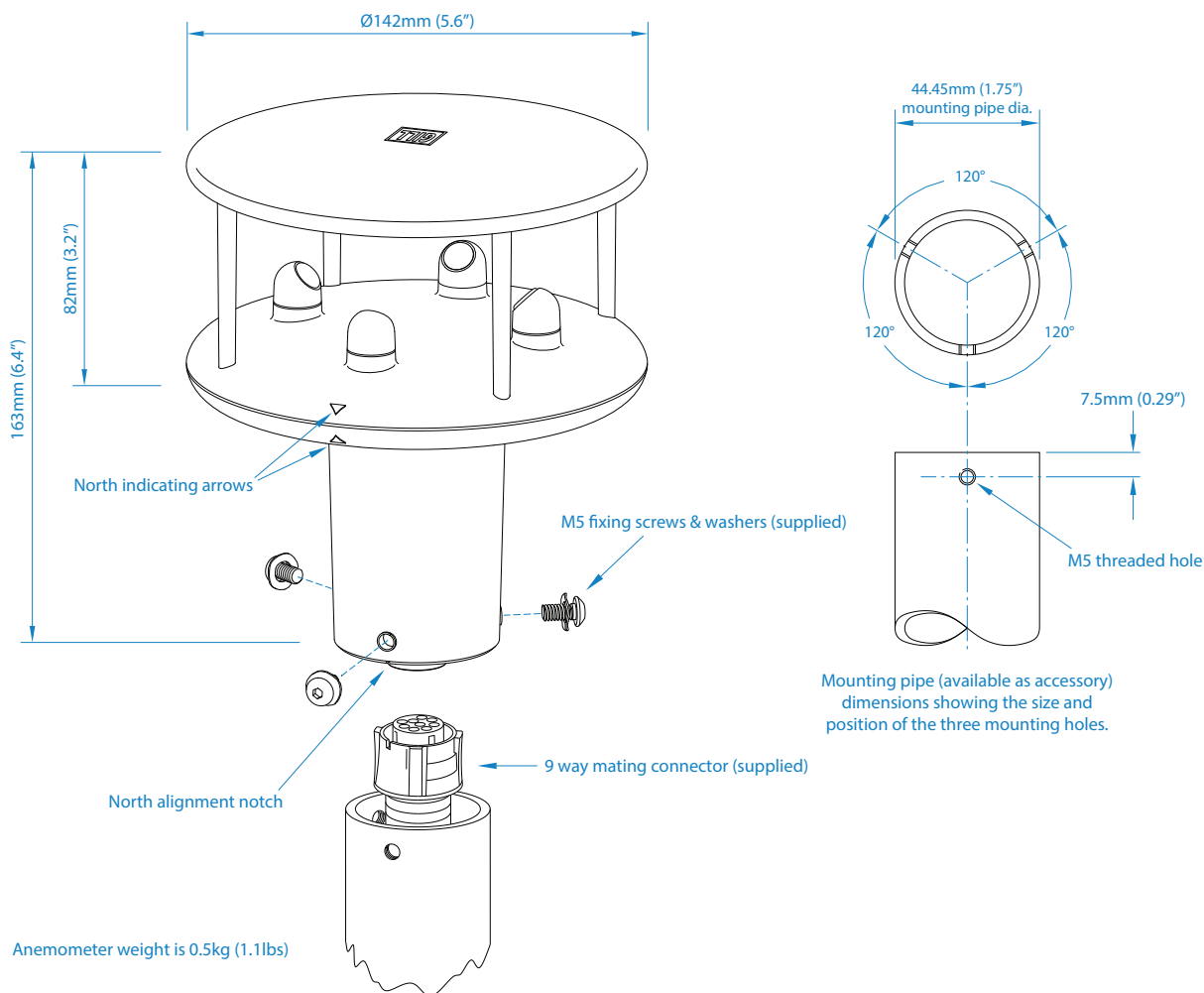
MTBF	15 years
Warranty	2 years
Factory Calibration	Traceable to National Standards

### ACCESSORIES

Pipe Mounting (optional)	44.45mm (1.75") dia x 500mm length
Cables (optional)	Available to match output options

## Typical Applications

- Remote weather monitoring stations
- Environmental field sites
- Agricultural Met
- Pollution Control
- Utilities
- Hydrological
- HVAC
- Environmental Protection



This product is in continuous development and therefore specifications may be subject to change without prior notice.



**Gill Instruments Limited**

Saltmarsh Park, 67 Gosport Street  
Lymington, Hampshire SO41 9EG  
United Kingdom

Tel: +44 (0) 1590 613 500  
Fax: +44 (0) 1590 613 501  
contact@gillinstruments.com

**gillinstruments.com**

1405-0028 Iss 6

Copyright © Gill Instruments 2019

Gill Instruments Ltd, Reg No. 2281574  
Registered Office: Towngate House, 2-8 Parkstone Road, Poole. BH15 2PW